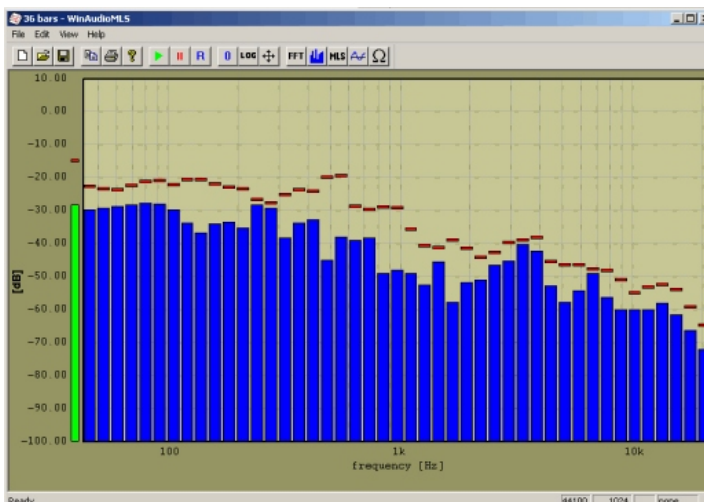
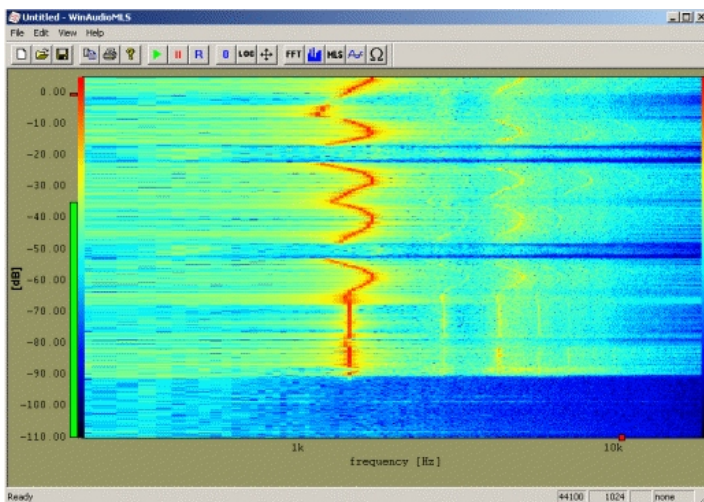
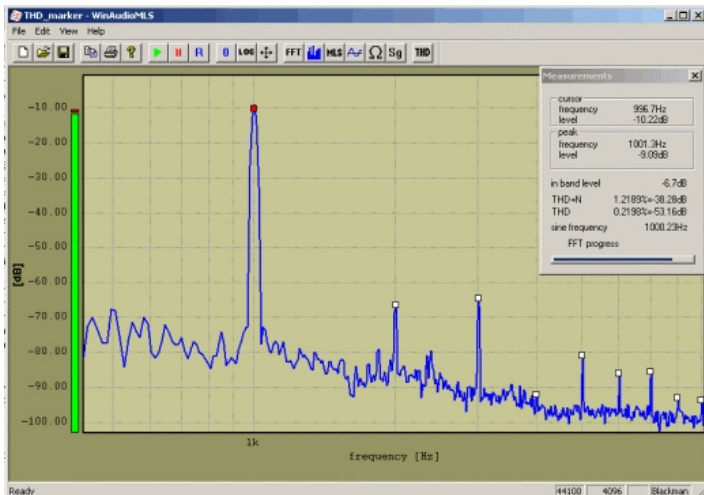


WinAudioMLS

Professional Audio Measurement Solutions

© 2003 www.Dr-Jordan-Design.de

WinAudioMLS is a professional Windows application for powerful real-time signal and system analysis. WinAudioMLS converts your PC with a soundcard into a professional audio analyzer. By using the PC environment, it is not only a cost efficient replacement for classical laboratory equipment. WinAudioMLS offers more powerful features combined with a comfortable user interface. Typical applications are loudspeaker measurements, repair and design of audio equipment. WinAudioMLS can also be used to adjust PA-systems, judgment of room acoustics, noise measurements or tuning of musical instruments. In addition there are many areas in the industrial measurement. Although WinAudioMLS is focused to audio, it has many applications in the area of sub - and supersonic engineering. If you run WinAudioMLS on a notebook, you can easily build a mobile measurement system.



PRO Version

FFT based spectrum analyzer

Measurement of transfer functions with 'Maximum Length Sequences' (MLS)

Measurement of impulse and phase response

Analyse distortion

Oscilloscope

high frequency resolution

Sample rate up to 96kHz

Windowing and weighting (DIN 'A'+ 'C')

Can be calibrated to measure e.g. SPL

Cursor and real-time display of measurements

Export results

Clipboard and printer are supported

PRO EX Version

Dual channel FFT+MLS analyzer

Time frequency analysis with a spectrogram

Measure cross-correlation

Intermodulation measurement

THD analysis with automatic markers at the harmonics

Measure impedance

Various digital signal processing options in time and frequency domain

Measure frequency response with real music signals instead of synthetic signals

System requirements

Win95/98/ME 2000/XP

Pentium 300 with 32MB memory

Windows compatible 16-bit soundcard

Screen resolution 800x600 with more than 256 colors